



KLEEMANN PQ



I N D E X

• CORPORATE PROFILE	03
• SUPPORT	29
• KLEEMANN PRODUCTS	34
• PROJECTS WORLDWIDE	48
• APPENDIX	74



The Company

Founded in 1983 in Kilkis, Greece, KLEEMANN is one of the major lift companies in the European and global market, providing any type of residential or commercial passenger and freight lifts, escalators, moving walks, accessibility and marine solutions, parking systems and lift components.

Its distribution network expands to more than 100 countries.

KLEEMANN stands for innovation in design and technology, for flexibility and breakthrough thinking, for quality products and dedicated services and support.

Integrated manufacturing facilities, highly trained workforce, state-of-the-art IT systems and logistics support enable KLEEMANN to deliver reliable, highly personalised solutions, whatever the challenge.

Worldwide Presence

KLEEMANN exports to more than 100 countries operating manufacturing facilities in Greece, Serbia and China, as well as assembly lines in Turkey and in Russia.

Installation and maintenance companies handle the distribution of our products all over the world.

Company's 360° services provide an upgraded experience to the customer who benefits from the expertise of KLEEMANN on installation services.

Our strategic approach and investments have enabled the specialised manufacture and export of products into multiple markets, developing our network, international presence and product range.



DID YOU KNOW THAT

We expand in more than

100

countries around
the world

KLEEMANN Group facilities
cover an area of 260.000 m²
in land and 180.000 m²
in buildings globally



Facilities



Car Sling Plant

Production, Welding, Sheet metal processing, Cutting-sawing, Training Centre, Showroom
Gross floor area: 10.357 m²



Piston-Power Unit Plant

Gross floor area: 5.500 m²



Cabins Plant

Total area site: 16.892 m²
Gross floor area: 10.329 m²





Electronics Plant

Total area site: 3.612 m²
Gross floor area: 1.500 m²



Logistics & Central warehouses

Gross floor area: 19.824 m²



Warehouses Athens

Gross floor area: 36.421 m²



KLEFER

Total area site: 19.561 m²
Gross floor area: 11.731 m²

KLEEMANN Liftovi

Production, Offices, Logistics
Total area site: 30.859 m²
Gross floor area: 10.400 m²



KLEEMANN China

Production, Offices, Logistics,
100m testing tower
Gross floor area: 19.300 m²



KLEEMANN Asansor

Assembly line, Offices, Logistics
Training Centre, Showroom
Total area site: 3.480 m²
Gross floor area: 6.470 m²



KLEEMANN Russia

Assembly line, Offices, Logistics
Total area site: 1.400 m²
Gross floor area: 3.430 m²



KLEEMANN Lifts UK

Warehouse, Offices,
Training Centre, Showroom
Gross floor area: 315 m²





KLEEMANN Culture

At KLEEMANN, we are committed to operating responsibly and with loyalty to our employees, customers, users and all our partners. We prioritise transparency and sustainable growth in order to create added value for both society and the wider environment in which we operate.

OUR VISION

We are a world leader in the manufacturing of lifts. We achieve consistent growth and success by investing in innovation, infrastructure and our people.

OUR MISSION

As a global enterprise, we innovate, we invest in our people and we grow, aiming at exceptional customer experience through a personal approach.

OUR VALUES

Our values form an integral part of our company's the activities. They are reflected in our management model and entire range of operations, through the initiatives we daily undertake.

SAFETY

We take care of all necessary measures to ensure the health and safety of our personnel, customers and users when using our products and within our premises.

TRUST

We do what we say and we say what we do. We place trust in our people and their abilities. At KLEEMANN, we are a united front. We are all aligned with each other and with our vision.

PASSION FOR PEOPLE

The well-being of our colleagues and customers is of the utmost importance to us. We invest in the strength of the bond between the company and its personnel. We are truly passionate about what we do and we strive to create opportunities for personal and professional development for all.

BREAKTHROUGH CULTURE

Innovation, growth, development and improvement are all vital to our business model. We set high goals, we commit to them, we take risks and we determinedly turn any opportunity into a learning experience. We are not afraid to fail.





Environment

Protecting the environment and fostering environmental awareness are priorities for KLEEMANN. We ensure that our environmental responsibility remains integral to our growth and to every aspect of our business activity.

We have also developed an environmental policy, which reflects our commitment to environmentally friendly practices and lays out specific environmental strategies. Our goals are:

- To provide environmentally conscious products and services
- To comply with all the environmental laws and regulations
- To continuously improve environmental management through internal audits and reviews of activities
- To develop programmes in order to achieve specific environmental objectives
- To implement measures that reduce the environmental impact of all business processes
- To carry out environmental training programmes for all employees in order to implement environmental management
- To promote open dialogue with all stakeholders and enhance the environmental awareness of all its employees and the society

Workforce

People are the driving force for the sustainable growth of KLEEMANN. Our main goal is to provide a safe place to work and grow. We strive to create a respectful, rewarding, diverse, and non-discriminating working environment where everyone can grow and develop.

Working at KLEEMANN

More than 1,400 people are currently employed by KLEEMANN. 53% of our employees are labour force and 47% are personnel, who have completed higher education, of which 8.4% hold postgraduate degrees. 73% of our employees are aged between 30–50 years old, whilst 68% have worked for more than four years at KLEEMANN.

Growth and development

KLEEMANN offers a diverse range of learning and growth opportunities to all its employees, enhancing their skills, experience and talents. To support our vision for continuous growth, we implement a Growth Policy that contributes to the professional and personal development of our people.

Moreover, foreign language courses are provided at our premises or in collaboration with foreign language schools. There is also a 90-hour product training programme provided for all new employees, during which a detailed analysis of all parts of the lift are presented.



Health and Safety

A Health and Safety Committee has been established to oversee production facilities and to support the Health and Safety Management System. Employees are encouraged to actively participate in this programme, which aims to engage employees in the management of health and safety issues. The health and safety groups work voluntarily in every production unit, and their goal is to identify, track and eliminate potential hazards. KLEEMANN prioritises the health and safety of all its employees, subcontractors and customers in every aspect of its activity. A certified Health and Safety Management System (OHSAS 18001) is applied since 2012, reflecting KLEEMANN's integrated management framework for health and safety issues.

Health and Safety Manager:

- Administers all aspects of the occupational health and safety program
- Develops programs and technical guides to identify and eliminate hazards from facilities, operations and sites
- Assists supervisors in all health and safety trainings for employees
- Conducts inspections to identify unhealthy or unsafe conditions or work practices
- Recommends programs and activities that develop and maintain incentives for employees' motivation regarding health and safety
- Ensures health and safety posters & emergency telephone numbers are posted in conspicuous places
- Develops and maintains accident reporting procedures and systems
- Investigates serious accidents and takes actions to eliminate accident causes





Marketplace

Focus on the customer

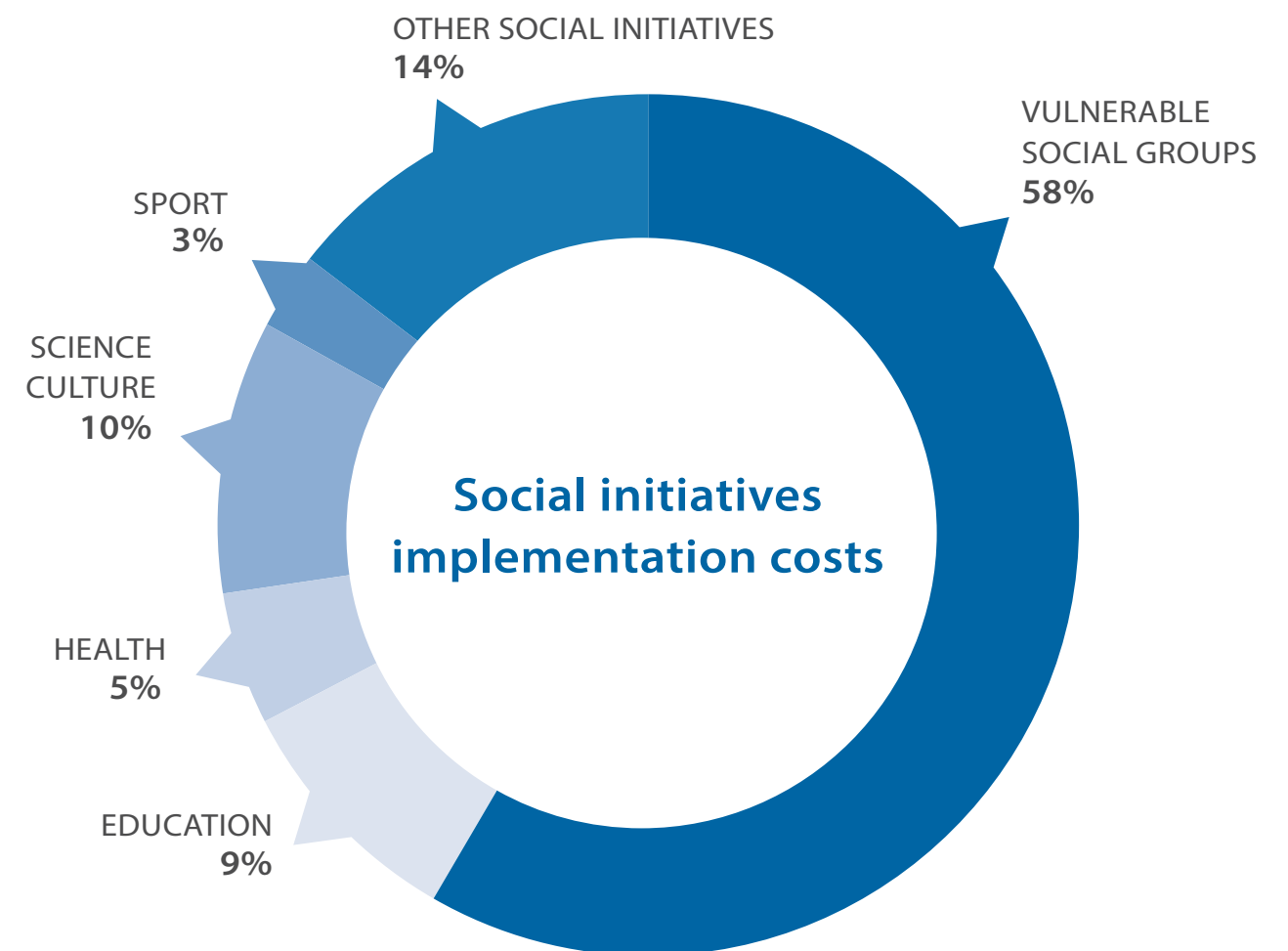
At KLEEMANN, our customers are the focus of our activities. We have adopted flexible procedures to maximise customer satisfaction whilst remaining faithful to our core values: quality, innovation and customer experience. KLEEMANN is committed to providing high quality products, flexible customer service and ongoing technical support. For this reason, we provide technical seminars for our customers' teams of technicians, training them in the installation, operation and maintenance of our lifts, both in theory and practice. We also arrange specialist seminars on safety regulations and informative sessions on international developments within the industry.

Suppliers - Relationships of trust and cooperation

KLEEMANN buys raw materials of the highest quality and our procurement management follows a specific process, ensuring transparency and objectivity. We carefully choose our suppliers and our collaboration with them is crucial to success. By fostering dialogue with our partners, we establish strong relationships, we identify our needs, and we operate within the market with respect, transparency, consistency and fairness.

Society

KLEEMANN, from the early beginning of its operations, emphasizes in building and maintaining relationships of trust, solidarity and mutual respect with local communities. Through the implementation of a variety of initiatives, we invest, support and cooperate with all stakeholders, mostly from the wider areas of Kilkis and Thessaloniki that the majority of our employees reside.





Quality Assurance

KLEEMANN is a trusted manufacturer of certified lift products, dedicated to providing reliable and quality services. For this reason, KLEEMANN was one of the first companies in Greece to develop a quality management system.

KLEEMANN implements a Quality Assurance System based on the international ISO 9001: 2015 Quality Standard, which meets the requirements of the European Lift Directive 2014/33 / EU, Annex XI (Module H1) concerning the design, construction, assembly, installation , inspection and testing of lifts.

The Quality Management System of the company complies with the requirements of the Standard: ISO 10.002: 2018 Quality Management - Guidelines for Customer Satisfaction and Complaint Management.

The scope of the Quality Management System is available to any interested party upon written request to the company.



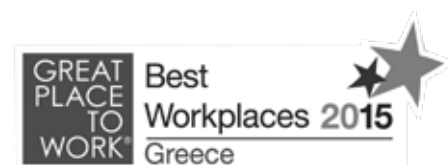
Our company strictly adheres to this quality management system, compliant with ISO 9001:2015, and an environmental management system that conforms to ISO 14001:2015. KLEEMANN also complies with the requirements of EN ISO 14006:2011 and moreover, observes an occupational health and safety management system that operates in accordance with OHSAS 18001:2007.

Our vision, values and strategic goals are driven by our investment in consistent research and development, not solely to advance our products and services, but to streamline procedures that improve operational efficiency, reduce costs and spur innovation in design.



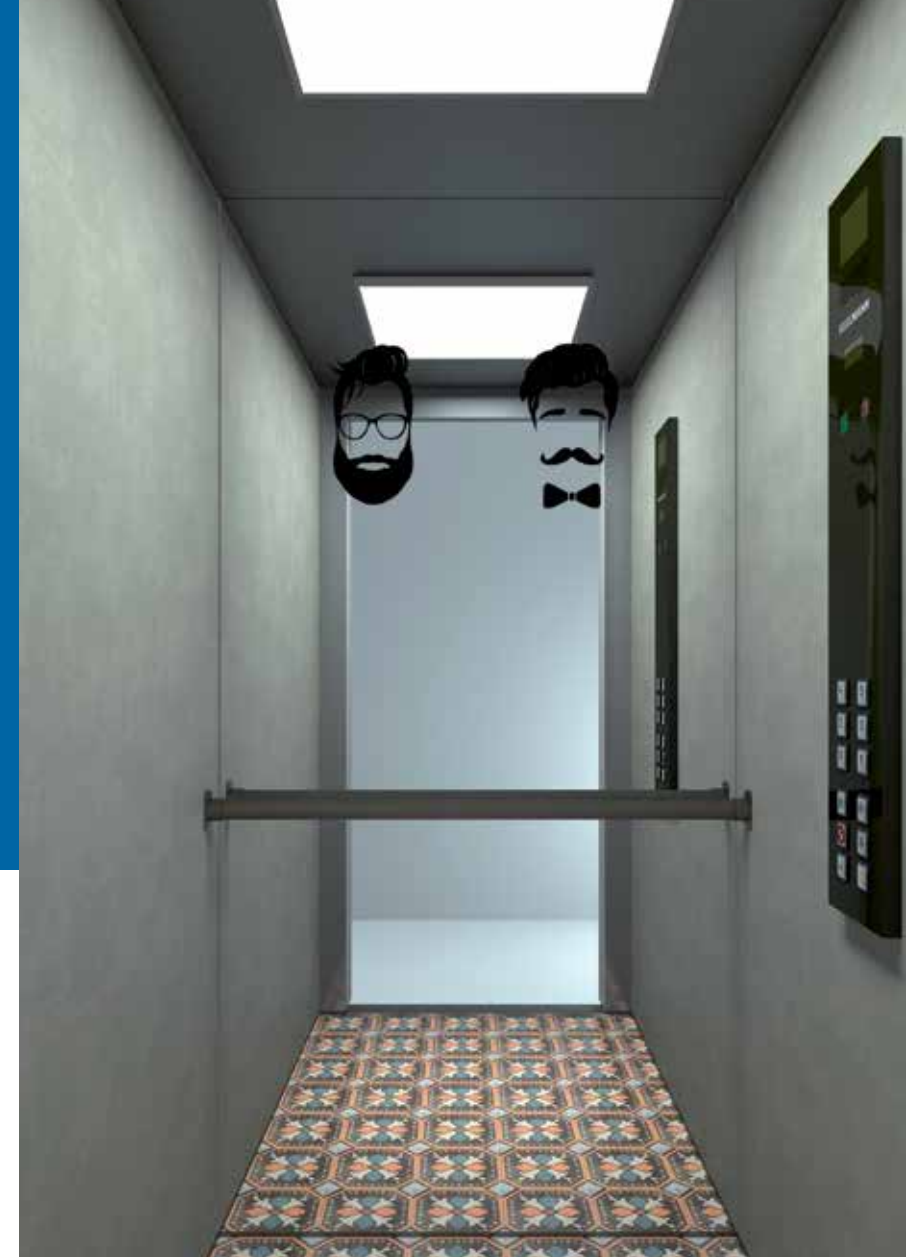
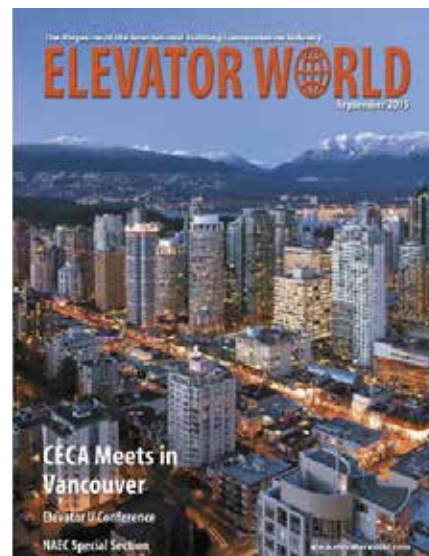
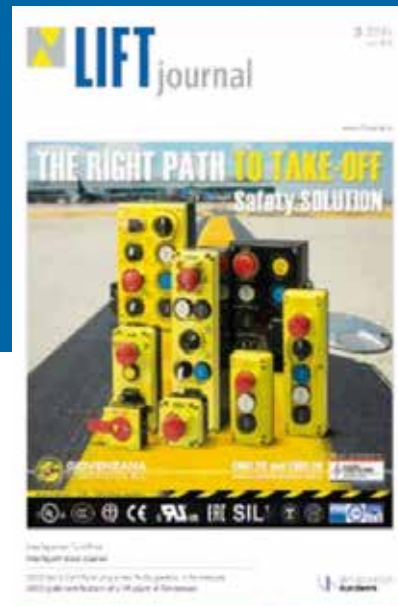
KLEEMANN Awards, Distinctions and Memberships

KLEEMANN has received many awards in recognition of its commitment to high quality products, superior services and relations, and for a valuable connection with the society and the marketplace.



العربية اليونانية للتجارة والتنمية
ARAB HELLENIC CHAMBER OF COMMERCE & DEVELOPMENT





Inspired

BY CONTEMPORARY AESTHETICS

We design inspired by real people, buildings, images, experiences, to create lifts that incorporate current trends and styles that people can identify with. Pop, urban, hipster...

The outcome is unique, expressive and modern, with lifts that combine a fresh stylistic personality together with top notch technology and function.



Find out more about TRENDS 2020

Visit us
Interlift 2019
15-18/10/2019
Stand 1130, Hall 1

Don't miss
VFA Forum, Hall 2, 17/10, 13:30
"Innovation through Design - Passenger Experience in the Elevator"



Company Details

Company Name:	KLEEMANN Hellas S.A.
Address:	Kilkis Industrial Area, P.O. BOX 25, 61 100
City:	Kilkis
Country:	Greece
Telephone Number:	+30 23410 38 100
Fax:	+30 23410 38 200
V.A.T. No:	EL 094124623
Email:	headoffice@kleemannlifts.com
Website	www.kleemannlifts.com

Financial & Legal Standing

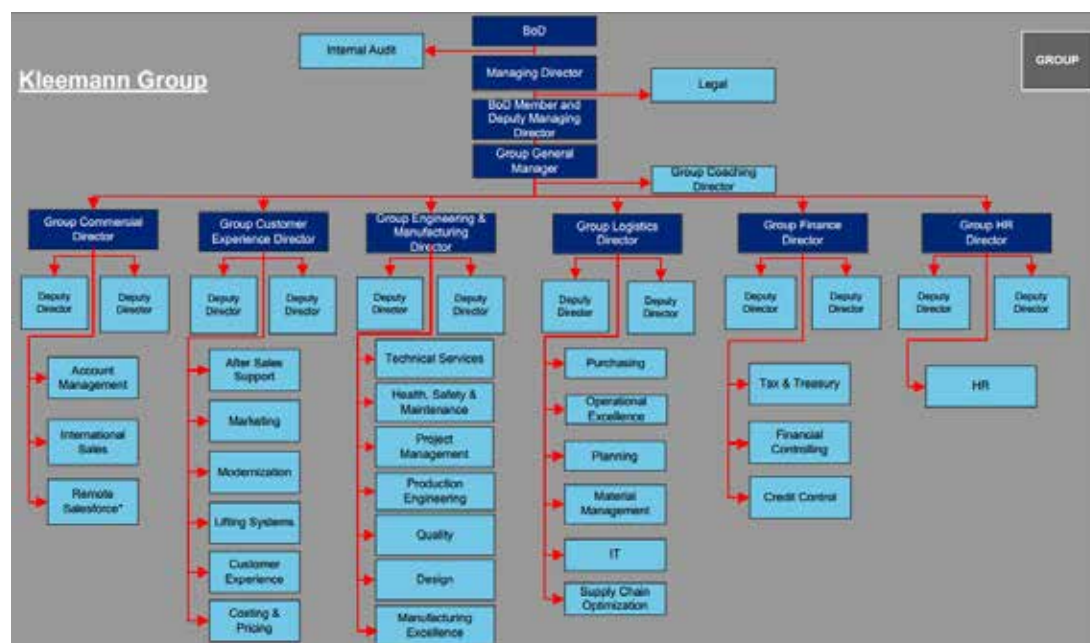
Date of Formation

"KLEEMANN HELLAS MECHANICAL CONSTRUCTIONS SOCIETE ANONYME INDUSTRIAL TRADING COMPANY S.A." with distinctive title "KLEEMANN HELLAS S.A." (the "Parent" or the "Company") was lawfully established in June 1983 (Government Paper 2308/27.7.1983).

Commercial Registration Number

Its Societe Anonyme (S.A.) registration number is 10920/06/B/86/40. Its operating duration has been defined until 31.12.2050 and its head offices are located in the Industrial area of Stavrochori, Kilkis Greece.

Organisation chart KLEEMANN group



Name of institution	Name and contact details
Bankers	
EFG Eurobank Ergasias S.A., Greece	Nikos Antonakis Account Officer Large Corporate EFG Eurobank Ergasias S.A. 301 Lagkada Str, 56430 Thessaloniki, Greece
Pireaus Bank S.A. Greece	Poulianakis M. District Director of Large Corporate 4th Amerikis Str, 10564 Athens, Greece
Solicitors	
N/A	Maria Karadedoglou Lawyer 115-117, 21 st Iouliou Str, 61100 Kilkis, Greece Tel: +30 23410 27222, Fax: +30 23410 70740 m.karadedoglou@kleemannlifts.com
Insurance Brokers	
Eurobrokers S.A., Greece	Evi Petroustoupoulou Sales Development Manager 9th Km Thessaloniki - Thermi, P.O. Box .5025, 57007 Thermi, Greece Tel: +30 2310 241900, Fax: +30 2310 244174



Financial Data

Company's Performance

FINANCIAL OVERVIEW

In € 000	2012	2013	2014	2015	2016	2017
Sales	92.344	94.825	97.964	107.047	115.859	134.652
Gross Profit	28.626	32.584	34.243	33.311	38.193	46.635
Gross Margin	31,0%	34,4%	35,0%	31,1%	33,0%	34,6%
Profit before tax	2.515	5.571	6.336	4.804	5.322	13.043
Profit before tax Margin	2,7%	5,9%	6,5%	4,5%	4,6%	9,7%
Total Equity	91.246	91.563	90.030	88.810	90.855	76.846
ROE (Profit after TAX/ Equity)	1,58%	2,22%	5,08%	4,08%	4,39%	12,81%
Investments (Cap.Ex.)	596	753	3.271	3.782	3.180	5.523
Net Debt (Loans-Cash)	2.713	-4.996	-10.211	-1.071	-2.017	8.428
EBITDA	5.695	8.987	9.519	7.752	8.318	16.997
Net Debt / EBITDA	0,5	0,6	-1,1	-0,1	-0,2	0,5
Sales in Greece	20.097	16.989	11.040	10.725	10.957	11.755
International Sales	72.247	77.836	86.924	96.322	104.902	122.897

KLEEMANN Engineering

KLEEMANN is a world partner for all types of passenger and freight lifts, with rated loads up to 30tones and speeds up to 7m/sec, for escalators and moving walks, marine solutions, parking systems, firefighting lifts, earthquake resistant lifts, green lifts and accessibility products.

From major-scale public ventures with high-specification objectives and short turnarounds, to cost-effective, compact and hard-wearing business solutions or affordable private residence projects, KLEEMANN develops ideal, safe and reliable products.

Besides a comprehensive range of standardised lifts, KLEEMANN can offer custom made lift solutions suitable for any special demand. Among our most popular lift solutions there are vandal resistant lifts, firefighter's lifts, earthquake lifts, super sized hydraulic (up to 20tones rated load) and traction lifts, special panoramic lifts, car lifts (rotated platform is an option too) and scissor lifts. Latest KLEEMANN custom solutions include a traction MRL lift with a rated load of 6tones, a double piston indirect acting hydraulic lift with a pit of 100 mm and a round shaped panoramic hydraulic lift.

Each lift is being rigorously tested to ensure ease of use and reliability.

Please find the annual report in the following link:
www.kleemannlifts.com/investors



KLEEMANN Design

KLEEMANN Design is about life. Going far beyond the elevator design, KLEEMANN cultivates an entire design culture that elevates each and every aspect of its operation. It is a way of thinking, a mindset of innovation.

Rather than thinking of the elevator as a box, KLEEMANN Design thinks of it as a unique space in the building and transforms the whole elevator experience into a new value for the people, the building, the environment.

Since 2007, KLEEMANN has launched its creative research, in cooperation with the industrial designer Andreas Zapatinas. That was the beginning of a new era. Through this rewarding partnership, new technical and aesthetic solutions were explored and developed. Inspired by human needs, KLEEMANN focuses on shaping new space qualities that lift the passenger's mood and stimulate interaction inside the elevator.

Focused on our innovation strategy KLEEMANN special Design Team serves as the creative force behind the development of elevators for your challenging projects. Our designers combine solution-oriented design with a service-driven approach, providing:



- High quality virtual proposals
- Digital animation of your project
- Architectural design assistance directly with you
- Architectural assistance to determine materials
- On site visit / feedback from you

DID YOU KNOW THAT

KLEEMANN Design has transformed cabins and doors by introducing the first curved-line elevator series with vibrant colours, hidden lighting and exceptional atmosphere.

KLEEMANN Services

To ensure that designing, ordering, receiving and maintaining these products is as stress-free and effortless as possible, KLEEMANN presents dedicated service teams that offer additional support and guidance at every stage.

KLEEMANN's warehouses and skilled staff ensure quick and efficient delivery, with our 24-hour technical support team handling aftercare and service guidance.

The company's direct connection to the end customer in cooperation with the local customers leads into a 360° service, an upgraded experience for the customer who benefits from the expertise of KLEEMANN on world class design and engineering in lifts.

Moreover, the company provides innovative e-services, such as the KLEEMANN Mobile Lift Tester application, the KLEEMANN Portal and the Virtual Online showroom offering its partners and customers the option of testing or designing a lift as well as the option of getting an immediate quote.



KLEEMANN After Sales Support website

KLEEMANN' s passion is to actively stand by our people, our customers and our collaborators.

Within this context, we have developed the new KLEEMANN After Sales Support website which will be your tool to handle any issue, right after you receive a KLEEMANN product.

Key Features

- Procedures available in both short & analytical versions
- Technical information
- Spare parts catalogue
- Videos for step by step installation, adjustments & tuning
- News on special spare parts offers & latest updates on our products
- Direct contact with the KLEEMANN service teams per area

KLEEMANN E-shop

eshop.kleemannlifts.com is a website which was created to service our clients' needs in terms of spare parts ordering for the orders supplied by KLEEMANN and for spare parts stock orders through our spares range. Our goal is faster services via simple procedures and instant updating for the order processing.

Training

KLEEMANN provide training to technicians and installers. Every month we organise trainings in different languages based on our customers' needs.

Every year 200 technicians are being trained here. It is estimated that during 2019 around 400 technicians will be trained. At KLEEMANN we train and coach both our customers and personnel. In total for our personnel training we invest more than 600.000€ a year (KLEEMANN Group). Production personnel are also included.

The training is not only technical. It is coaching as well, as 95% of our people is being coached every year. Through coaching they get help and support not only to accomplish business goals but also personal ones.

Lift Tester

KLEEMANN Lift Tester is a free app that uses the sensors on your iOS device and special algorithms to measure the acceleration, velocity, jerk, distance and noise, i.e. the quantitative measures of a lift's ride quality.

Version 2.0 is a complete redesign and rewrite of the app, and takes advantage of the latest hardware and software features of iOS devices. The app is ideal for casual measurements of elevator ride quality, especially with the aim of comparing different traction technologies or of assessing the evolution of ride quality of a specific lift over time.



Design Your Lift

Create the look & feel of your elevator just the way you like it, by exploiting the KLEEMANN application "Design your Lift".

Combine colours, materials, lighting and fixtures, from our ready-made design lines with numerous styles for walls, ceilings and floors from luxurious to minimal, from basic to sophisticated, from warm and cozy to durable and firm. Free your imagination and stand for mobility.

Visit: www.designyourlift.com

Features

- Automated tasks normally done by engineers and designers
- Integrated cabin design options / Real time changes
- Optimum solutions for the given dimensions of the shaft
- Dynamic floor plans / Real time changes
- Auto correction
- Installation plans generated by the KLEEMANN portal
- Responsive web design

Highlights

- Offer for a standard product in 5 minutes
- Planning data available in 10 minutes
- Upgraded user experience
- Ease of use and flexibility
- Special prices

KLEEMANN Portal

The KLEEMANN Portal has been designed and developed with our customers' needs in mind. The innovative online tool enables all users to quickly and effortlessly create and receive detailed designs and quotes tailored to each project. Simply enter the dimensions of your existing lift shaft to generate accurate and realistic 3-D plans and views.

Access KLEEMANN Portal from your desktop, tablet or mobile device to preview cabin designs, options and quotes. A unique advantage of KLEEMANN's Portal is the live offers you can get for our most popular lift solutions. You can also navigate your offers' history to retrieve and download the details of previous offers and quotes, as well as request the creation of new drawings and plans.



Elevators

KLEEMANN is a lift company offering complete traction and hydraulic lift systems, both with and without machine room, from initial concept through development to final production.



▲ PASSENGER LIFTS

FREIGHT LIFTS ▶

PARKING SYSTEMS ▼



▲ ACCESSIBILITY SOLUTIONS

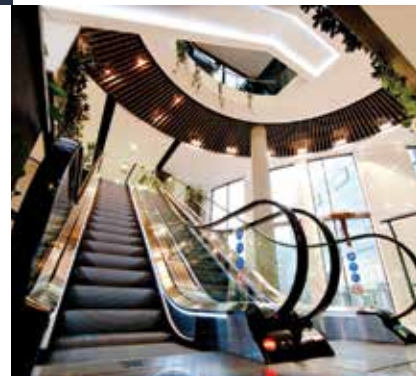


◀ MARINE SOLUTIONS



◀ MODERNISATION SOLUTIONS

ESCALATORS & MOVING WALKS ▶



Flexy MR/MRL

An eco-friendly solution which offers flexibility in both lift dimensions and machine room location



Specifications

Model	FlexyLIFT
Rated Load (Kg)	180-1000
Suspension	1:2
Machine Room	MR-MRL
Max Travel (m)	25m
Max Number of Stops	9
Max Speed (m/s)	1,0
Min Pit Depth (mm)	300(MR) 800(MRL)
Min Headroom (mm)	2600
Complies with	2014/33/EU & EN81.20(MR) Safety standards EN81.21(MRL) & 2014/33/EU
Accessibility	♿ ♿ ♿

Atlas Basic

A cost-effective solution that fulfills your vertical transportation needs



Specifications

Model	Atlas Basic
Rated Load (Kg)	375-1000
Suspension	2:1
Machine Room	MRL
Max Travel (m)	45m
Max Number of Stops	16
Max Speed (m/s)	1,6
Min Pit Depth (mm)	v≤1.0 m/s 1100 v=1.6 m/s 1250
Min Headroom (mm)	v≤1.0 m/s 3400 v=1.6 m/s 3600
Complies with	Lifts Directive 2014/33/EU & EN81.20
Accessibility	♿ ♿ ♿ +



Atlas RPH

A practical solution for buildings with pit and headroom limitations



Specifications

Model	Atlas RPH
Rated Load (Kg)	525-1050
Suspension	2:1
Machine Room	MRL
Max Travel (m)	40m
Max Number of Stops	14
Max Speed (m/s)	1,0
Min Pit Depth (mm)	320
Min Headroom (mm)	2600
Complies with	Lifts Directive 2014/33/EU & EN81.20
Accessibility	

Atlas Gigas

A practical solution for buildings with pit and headroom limitations



Specifications

Model	Atlas Gigas
Rated Load (Kg)	1050-2500
Suspension	2:1
Machine Room	MRL
Max Travel (m)	45m
Max Number of Stops	16
Max Speed (m/s)	1,6
Min Pit Depth (mm)	v≤1.0 m/s 1100 1<v≤1,6m/s 1270
Min Headroom (mm)	v≤1.0 m/s 3800 1<v≤1,6m/s 4000
Complies with	Lifts Directive 2014/33/EU & EN81.20
Accessibility	

Atlas Premium

The perfect combination of exceptionally low energy consumption and outstanding performance



Specifications

Model	Atlas Premium
Rated Load (Kg)	375-1000
Suspension	2:1
Machine Room	MRL
Max Travel (m)	65m
Max Number of Stops	24
Max Speed (m/s)	1,6
Min Pit Depth (mm)	v≤1.0 m/s 1100 v=1.6 m/s 1250
Min Headroom (mm)	v≤1.0 m/s 3400 v=1.6 m/s 3600
Complies with	Lifts Directive 2014/33/EU & EN81.20
Accessibility	

Atlas Super Gigas

A traction solution for freight transportation up to 5000kg, fully exploiting the shaft space



Specifications

Model	Atlas Super Gigas
Rated Load (Kg)	2500-5000
Suspension	4:1
Machine Room	MRL
Max Travel (m)	45m
Max Number of Stops	16
Max Speed (m/s)	1,0
Min Pit Depth (mm)	1400
Min Headroom (mm)	3900
Complies with	Lifts Directive 2014/33/EU & EN81.20
Accessibility	



HRS

A high speed solution for large buildings with high density passenger flow



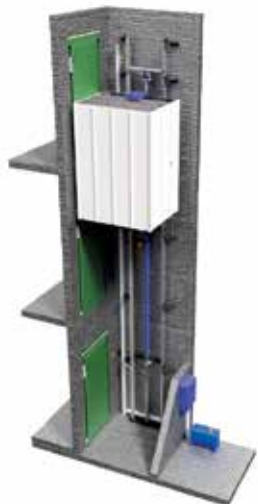
Specifications

Model	HRS (MRL)	HRS (MR)
Rated Load (Kg)	630-1275	1000-1600
Suspension	2:1	2:1
Machine Room	MRL	MR
Max Travel (m)	150m	150m
Max Number of Stops	47	47
Max Speed (m/s)	2,0-2,5	2,0-2,5-3,0-4,0
Min Pit Depth (mm)	v=2.0 m/s 1800	v=2.0 m/s 1800
Min Pit Depth (mm)	v=2.5 m/s 1950	v=2.5 m/s 1950
Min Pit Depth (mm)	-	v=3.0 m/s 1950
Min Pit Depth (mm)	-	v=4.0 m/s 3800
Min Headroom (mm)	v=2.0 m/s 4450 (630-1000kg)	v=2.0 m/s 4140
Min Headroom (mm)	v=2.0 m/s 4500 (1275kg)	v=2.5 m/s 4380
Min Headroom (mm)	v=2.5 m/s 4700 (630-800kg)	v=3.5 m/s 4470
Min Headroom (mm)	v=2.5 m/s 4750 (1000-1275kg)	v=4.0 m/s 4680
Complies with	Lifts Directive 2014/33/EU & EN81.20	Lifts Directive 2014/33/EU & EN81.20
Accessibility	♿ ♿ ♿	♿ ♿ ♿

** For external cabin height 2340mm

Maison100 E

A value for money hydraulic solution with minimum space requirements



Specifications

Model	Maison100 E
Rated Load (Kg)	up to 385
Suspension	1:6
Machine Room	MR
Max Travel (m)	12m
Max Number of Stops	5
Max Speed (m/s)	0,15
Min Pit Depth (mm)	100
Min Headroom (mm)	2500
Complies with	2006/42/EC
Accessibility	♿ ♿

Maison100 H

A value for money hydraulic solution with minimum space requirements

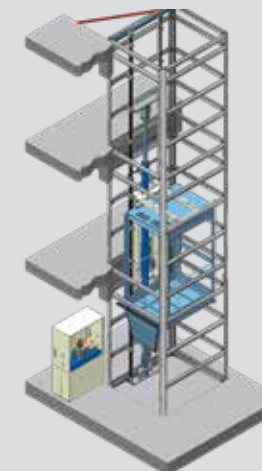


Specifications

Model	Maison100 H
Rated Load (Kg)	200-400
Suspension	1:2
Machine Room	MRL with machinery cabinet
Max Travel (m)	12m
Max Number of Stops	5
Max Speed (m/s)	0,15
Min Pit Depth (mm)	100
Min Headroom (mm)	2400
Complies with	2006/42/EC
Accessibility	♿ ♿

MaisonLIFT Plus

Premium design to lift your senses with tailor-made design options



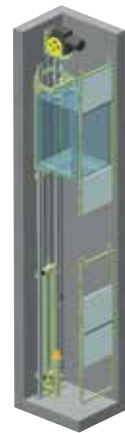
Specifications

Model	MaisonLIFT Plus
Rated Load (Kg)	180-630
Suspension	1:2
Machine Room	MRL with machinery cabinet
Max Travel (m)	17m
Max Number of Stops	8
Max Speed (m/s)	0,52
Min Pit Depth (mm)	200
Min Headroom (mm)	2600
Complies with	Lifts Directive 2014/33/EU & EN81.20
Accessibility	♿ ♿



Service Lift

Service Lift is the ideal space-saving solution for the easy transportation of small freights

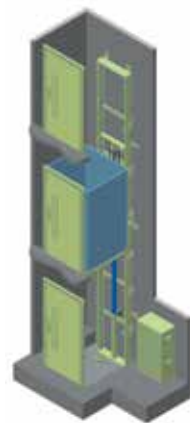


Specifications

Model	Service Lift
Rated Load (Kg)	24-300
Suspension	1:1
Machine Room	MRL with cabinet
Max Number of Stops	12
Max Speed (m/s)	0,17-0,60
Min Pit Depth (mm)	min. 600
Min Headroom (mm)	min. 1600
Accessibility	

Compact

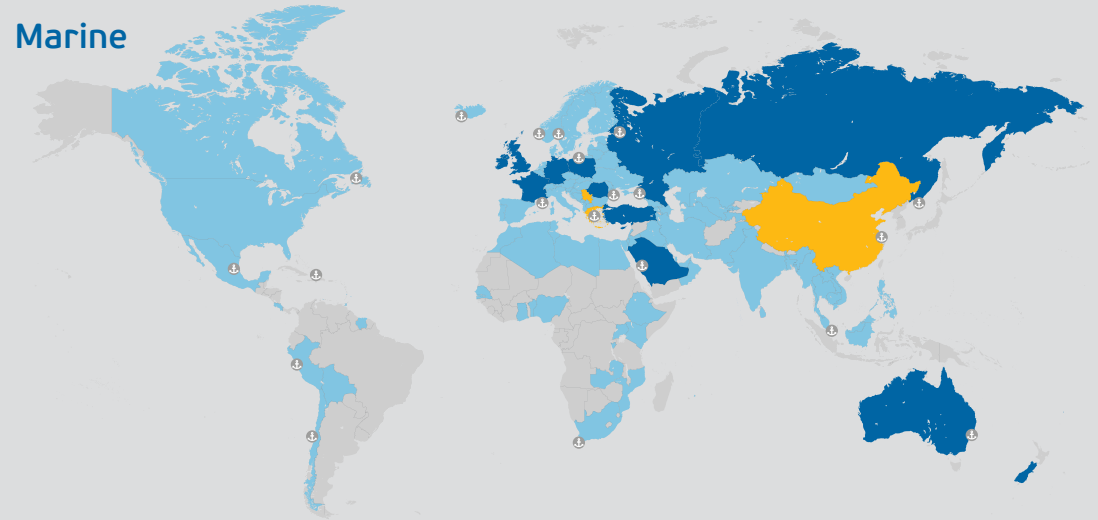
Hydraulic hoisting lift for freight, designed primarily for industrial facilities and warehouses



Specifications

Model	Compact
Rated Load (Kg)	300-2000
Suspension	2:1
Machine Room	MRL with machinery box
Max Travel (m)	11,5m
Max Number of Stops	4
Max Speed (m/s)	0,15
Min Pit Depth (mm)	min.160
Min Headroom (mm)	min.2200
Complies with	Machinery Directive 2006/42/EU
Accessibility	

Marine



KLEEMANN offers a range of Marine solutions for the vertical transportation of passengers and goods in private and commercial cruise ships, luxury yachts, ferries, cargo ships and offshore rigs. Whatever the project, KLEEMANN's expertise and experience ensures tailored design options and flexible installation solutions will enhance both the operational functions and the unique environment of your specific vessel.

Custom Solutions

At KLEEMANN we enjoy a favorable worldwide reputation for our customised design expertise



- 100% customisation
- Green Lifts
- Earthquake resistant lifts
- Anti-vandal lifts
- Firefighting lifts



Passengers



Good/Passengers (light/medium)



Good/Passengers (heavy)



Disabled persons



Bed Lift



Goods only



Car lift



FreeSTAIR Vertiplat

The most cost-effective solution for users with limited mobility, enabling access to buildings where installation or operation of a lift is not possible



Specifications

Model	FreeSTAIR Hydraulic Lifting System (Vertiplat)
Rated Load (Kg)	300
Max Travel (m)	7m
Max Speed (m/s)	0,10
Min Pit Depth (mm)	120
Complies with	Machinery Directive 2006/42/EC
Power Supply	Single or 3 phase motor 50/60 Hz

freeSTAIR with seat

Designed to help users of all ages who have difficulty climbing stairs



Specifications

Model	KSL 200	A 130	A180	T80 Chairlift
Type	Straight/ Circular	Straight	Straight/ Circular	Straight/ Circular
Rated Load (Kg)	130	127	120	225
Installation	Indoors/ Outdoors	Indoors/ Outdoors	Indoors	Indoors/ Outdoors
Max Travel (m) - Stops	4 Stops	2 Stops	4 Stops	4 Stops
Max Speed (m/s)	0,1	0,1	0,1	0,1
Inclination (degrees)	0-70	27-55	0-58	0-60
Power Supply	Rechargeable batteries	Rechargeable batteries	Rechargeable batteries	Rechargeable batteries
Required staircase with	90	80	90	90
Motor Power	24V DC/0,35Kw	24V DC/0,25Kw	24V DC/0,375Kw	24V DC/0,55Kw

freeSTAIR for wheelchair

Designed to enable wheelchair users to move with autonomy, safety and comfort



Specifications

Model	T100 Platform	T80 Platform	V64	V65
Rated Load (Kg)	300	300	300	300
Installation	Indoors/ Outdoors	Indoors/ Outdoors	Indoors/ Outdoors	Indoors/ Outdoors
Inclination (degrees)	15-45	0-60	7-50	0-45
Platform sizes (mm)	750*1000 or 800*1000 - Special sizes are possible up to 900X1500	680*840, 700* 900,750*1000, 800 X1000- Special sizes are possible up to 900*1200mm	830*700, 1050*770 with independent or retractable arms 1250*800 only with independent arm	830*700, 1050*770 with independent or retractable arms 1250*800 only with independent arm
Colours	RAL 7047-8022- 9002-9007	RAL 9032-7047- 8022-9002- 9006-9007	Unit RAL 9018- Rail Black RAL 9005	Unit RAL 9018- Rail Black RAL 9005
Motor	24V DC/0,42Kw	24V DC/0,42Kw	220V DC/0,75Kw	24V DC/1Kw
Speed	0,08 m/sec	max 0,15 m/sec	0,07 m/sec	0,13 m/sec
Safety systems	Safety gear - "Hold to run" contros	Safety gear - "Hold to run" contros	Safety gear - "Hold to run" contros	Safety gear - "Hold to run" contros
Complies with	Machinery Directive 2006/42/EC-EC type examination certificate	Machinery Directive 2006/42/EC-EC type examination certificate	Machinery Directive 2006/42/EC-EC type examination certificate	Machinery Directive 2006/42/EC-EC type examination certificate



Puzzle parking system

Installation of Hydraulic Car Parking Systems provides additional independent parking spaces for 2 vehicles



Specifications

Model	BDP-2
Levels	2
Available car dimensions	1850*5070*1550-2050 mm
Rated Load (Kg)	2000-2500Kg
Drive mode	Hydraulic cylinder + wipe ropes
Operation	Code, Card, Manual
Control	PLC centralized control system
Elevating speed	8-12 m/min
Sliding speed	7,5 m/min
Power Supply	3 phase/380V/50-60Hz
Finishing	Powder coating

Vehicle turntable

Installation of Hydraulic Car Parking Systems provides additional independent parking spaces for 2 vehicles



Specifications

Model	Vehicle Turntable
Min Pit Depth (mm)	200-250
Pit diameter (mm)	4600
Moto type	Hydraulic motor with slew ring drive
Rotation (degrees)	360

KPS Car parking system

Installation of Hydraulic Car Parking Systems provides additional independent parking spaces for 2 vehicles



Specifications

Model	Hydro Park 1127	Hydro Park 1123	Hydro Park TPTP-2
Rated Load (Kg)	2700	2300	2000
Equipment weight (Kg)	1100	1000	850
Lifting height	2100 mm	2100 mm	1600 mm
Usable platform width	2100 mm	2100 mm	2100 mm
Power Supply	220-420V, 1-3 phase,50/60Hz	220-420V, 1-3 phase,50/60Hz	220-420V, 1-3 phase,50/60Hz
Control power	24V	24V	24V
Lock device	Dynamic	Dynamic	Dynamic
Lock release	Electric auto release	Electric auto release	Electric auto release
Operation	Key switch	Key switch	Key switch
Power unit	2,2Kw hydraulic power pump	2,2Kw hydraulic power pump	2,2Kw hydraulic power pump
Lifting/lowing time	50/45 sec	50/45 sec	<45 sec
Finishing	Powder coating/ galvanized	Powder coating/ galvanized	Powder coating/ galvanized
Basement height	-	-	Suitable for basements with available height 3000 mm



KTS Car lifting System

KTS Car Lifting Systems are designed for the vertical transportation of vehicles between two or more levels



Specifications

	KTS 2200	KTS 3000
Model	KTS 2200	KTS 3000
Rated Load (Kg)	2200	3000
Max Travel (m)	12000 mm	10000 mm
Stops	max 4	max 4
Platform	max 2440*5500 mm	max 2440*5500 mm
Speed (m/s)	max 0,15 m/sec	max 0,15 m/sec
Pit depth (mm)	min 400 mm	min 500 mm
Headroom (mm)	min 2700 mm	min 2700 mm
Motor	9,5Kw/380V/50Hz	12Kw/380V/50Hz
Pistons	KZAC 100X5 / KZAC 100X8,5	KZAC 100X7
Tank	Kleemann T150	Kleemann T250
Controller	KTS GL-1	KTS GL-1
Block of valve	Blain KV15	Blain KV15
Landing doors	Roller shutters with 3-phase external motor	Roller shutters with 3-phase external motor
Complies with	Machinery Directive 2006/42/EC-EC type examination certificate	Machinery Directive 2006/42/EC-EC type examination certificate

Scissor lifti platform

KLEEMANN single and double Scissor Lift Platforms provide a simple and convenient way to facilitate and optimise parking space



Specifications

	Sinle Scissor Platform	Double Scissor Platform
Model	Sinle Scissor Platform	Double Scissor Platform
Rated Load (Kg)	3000	3000
Max Travel (m)	4000 mm	7400 mm
Stops	2	3
Platform	max 3000*6000 mm	max 3000*6000 mm
Speed (m/s)	0,05-0,08 m/sec	0,05-0,08 m/sec
Pit depth (mm)	min 500 mm	min 600 mm
Headroom (mm)	min 2500 mm	min 2500 mm
Motor	5,5Kw/380V/50Hz	7,5Kw/380V/50Hz
Pistons - Cylinder	2 items Φ70-Φ120X135	2 items Φ80-Φ140X160
Complies with	Machinery Directive 2006/42/EC-EC type examination certificate	Machinery Directive 2006/42/EC-EC type examination certificate
Landing doors	Roller shutters with 3-phase external motor	Roller shutters with 3-phase external motor

Escalators and Moving Walks

Escalators

Tailor-made design services for commercial or heavy duty Escalators that feature exceptional ride quality, safety and energy efficiency



Specifications

	KEC Commercial	KEC Heavy Duty
Model	KEC Commercial	KEC Heavy Duty
Max Speed (m/s)	0,5	0,5 or 0,65
Working hours (per day)	16-20	20-24
Installation	Indoor, semi-outdoor, outdoor	Indoor, semi-outdoor, outdoor
Vertical rise (m)	2-7,5	2-35
Step Width (mm)	600, 800 or 1000 mm	600, 800 or 1000 mm
Motor type	AC1 or WVF	AC1 or WVF
Theoretical capacity (according to EN115, Annex H)	3600, 4800 or 6000 passengers per hour	4400, 5900 or 7300 passengers per hour (for speed 0,65m/s)

Moving walks

The ideal solution for new installations in hotels, hospitals, public and commercial buildings



Specifications

	KTC-KTH Commercial	KTW Heavy Duty
Model	KTC-KTH Commercial	KTW Heavy Duty
Max Speed (m/s)	0,5	0,5
Working hours (per day)	16-20	20-24
Installation	Indoor, semi-outdoor, outdoor	Indoor, semi-outdoor, outdoor
Vertical rise (m)	2-8	0-8 (max length 120)
Motor type	AC1 or WVF	AC1 or WVF
Theoretical capacity (according to EN115, Annex H)	4800 or 6000 passengers per hour	4800 or 6000 passengers per hour
Pallet Width (mm)	800 or 1000 mm	800, 1000, 1200 or 1400 mm



Aviva Stadium
Dublin | IRELAND

| 16 Traction MRL lifts, 2 Hydraulic lifts



EmQuartier
Shopping Mall
Bangkok | THAILAND



| Maison lift



National
Business Center
Chisinau | MOLDOVA



Porsche

Los Trapenses | CHILE



Green Gold
Shopping Mall
Zagreb | CROATIA





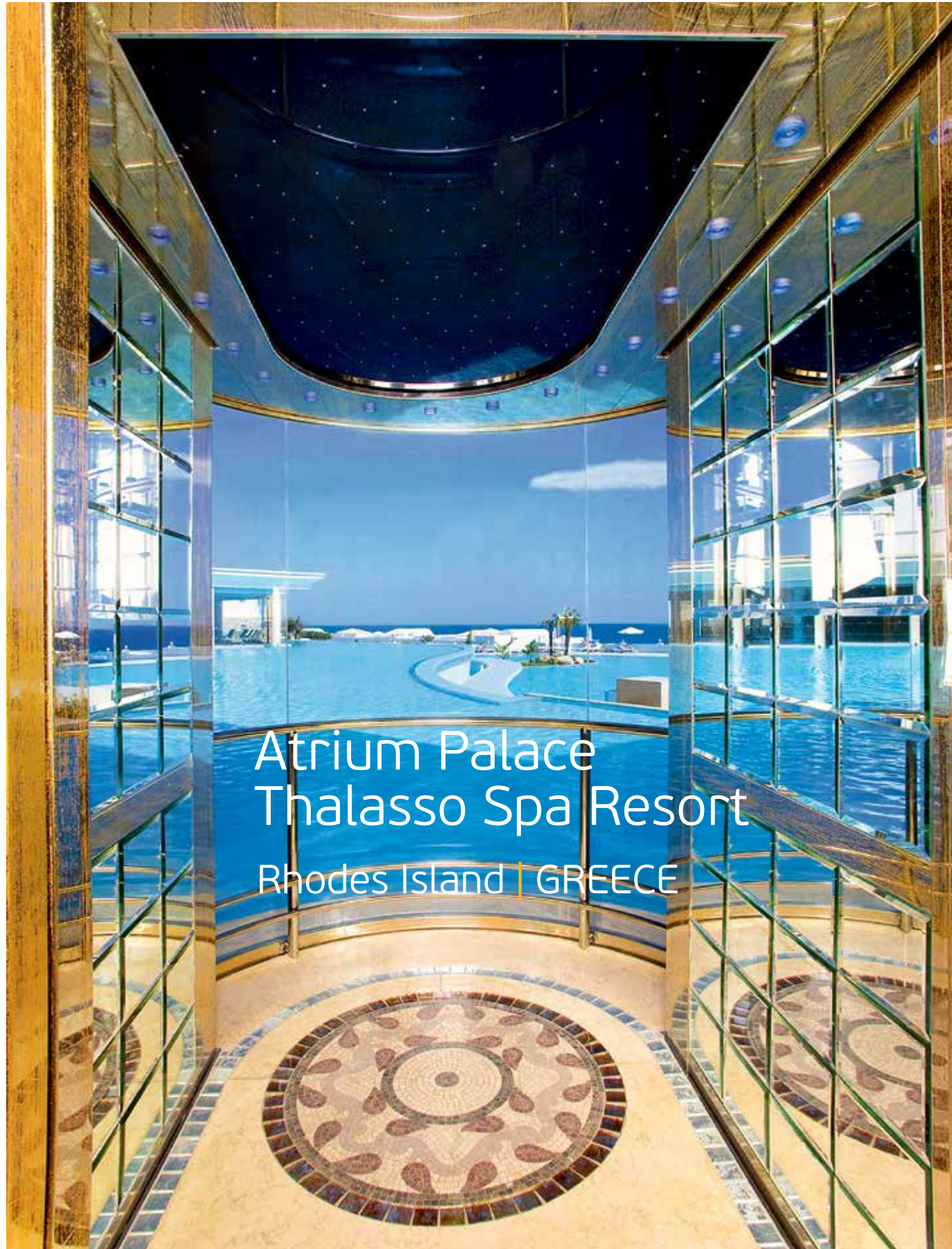
| 14 Atlas Traction MRL lifts, 4 Atlas Gigas, 4 Traction MR lifts



| 1 Hydraulic lift ,14 Escalators



Hotels



Atrium Palace
Thalasso Spa Resort
Rhodes Island | GREECE



Hotel
Marriott
Belgrade | SERBIA



| Hydraulic Freight lift (HADI)



MOSS
Boutique Hotel
| RUSSIA



- 2 2YAK FLOOR
201-218
- 1 2YAK FLOOR
100-100
- 0 2YAK FLOOR
ПЕЧЕНЬ RECEPTION
РЕСТОРАН RESTAURANT
ЛОББИ-БАР LOBBY-BAR
ПЕРЕГОБОРНАЯ MEETING ROOM
ТЕРРАСА TERRACE
ТУАЛЕТ WC



- 2 2YAK FLOOR
402-404
- 1 2YAK FLOOR
302-308
- 0 2YAK FLOOR
ПЕЧЕНЬ RECEPTION
РЕСТОРАН RESTAURANT
ЛОББИ-БАР LOBBY-BAR
ПЕРЕГОБОРНАЯ MEETING ROOM
ТЕРРАСА TERRACE
ТУАЛЕТ WC



Auchan Velizy

Paris | FRANCE

Saline Water Conversion (SWCC)

Jubail | KINGDOM OF SAUDI ARABIA



Private
Residence
Melbourne | AUSTRALIA



Maison lift Basic, Hydraulic lift



Atlas Basic Panoramic lift



Apartment
Buildings
Budapest | HUNGARY

The image shows the interior of a car lift. The walls are made of vertical stainless steel panels with horizontal brushed metal handrails. The floor is composed of large, dark grey rectangular tiles. The ceiling features recessed lighting panels. The overall design is clean, modern, and industrial.

Private Villa

| SWITZERLAND

| Car lift (double piston and rated load 4.800 kg)



Marine



| 1 Passenger lift & 1 Service lift

BLUE
DIAMOND

| PRIVATE YACHT



| 1 Crew Elevator

MARAN
HERMES

| CARGO VESSEL



| 5 Passenger lift

PROJECT
CZAR

| PRIVATE CRUISE



| 3 Passenger lifts

ELYROS

ANEK Lines | Ferry Boat



Mary Rose Museum
Portsmouth | UK

| 2 Traction MRL Panoramic lifts

Palace of
Congresses,
Kremlin

Moscow | RUSSIA





Zakyntos
Music Theatre
Zante | GREECE



| 4 Goods-Passenger lifts (10 t rated load)



| Platform



Oil Rig Cat D
Songa Offshore | NORWAY

APPENDIX



WARRANTIES

KLEEMANN CERTIFICATES

KLEEMANN CERTIFICATES

KLEEMANN CERTIFICATES

LEGAL GUARANTEE

Lift components and other products (such as escalators, moving walks, parking systems, stair lifts etc) that the Supplier KLEEMANN HELLAS SA manufactures and markets are legally guaranteed as to their good manufacture, quality and operation, for a period of two (2) years from the date of delivery at KLEEMANN's factory.

Specifically for lifts, the following apply:

Hydraulic lifts:

1. Hydraulic lifts unit :
 - Ram: two (2) years,
 - Hydraulic pressure rubber hose: two (2) years
 - Power unit (with the exception of the motor winding): two (2) years. For Motor windings and coils of the valves block a two (2) year guarantee is provided only as long as the lift controller and hydraulic oil used have been supplied by KLEEMANN as well; otherwise no guarantee is provided.
 - Car sling, pulleys, abutments/supports, buffers, safety gears, rope anchors, metal piping and connections and other mechanical components, such as storage compartments, buffer bases, shaft metal bases: two (2) years
 - Hand pump, pressure gauges, pump, silencer, block, oil cooler and other accessories for 2 years.
2. Circuit board and all other electrical and electronic parts (photocells, electronic overload, rescue boards, safety light curtains, floor indicators, buttons, sensors): two (2) years
3. Cabin:
 - Steel sheet and mechanical parts: two (2) years,
 - Parts made of wood, MDF and plastic laminate: two (2) years
 - Floor construction: two (2) years
4. Automatic doors, semiautomatic and bus type doors: Steel sheet, electrical and electronic parts: two (2) years
5. Various parts: Rollers, wire ropes and guide rails: two (2) years
6. Lift safety components (safety gear, rapture valve, A3 kit, buffers): two (2) years
7. Car sling and mechanical parts: two (2) years,

Electric (Traction) lifts:

1. Electric (traction) lifts unit :
 - Machine, motor, traction sheaves (with the exception of the motor and break winding): two (2) years. For the motor and break winding a two (2) year guarantee is provided only as long as the lift controller used has been supplied by KLEEMANN as well; otherwise no guarantee is granted (the same guarantee period is valid for the motor and break winding provided that the lift controller used has been supplied by the supplier as well).
2. The controller and all other electrical and electronic parts (photocells, electronic overload, rescue boards, safety light curtains, floor indicators, buttons, sensors, inverters): two (2) years
3. Car:
 - Steel sheet and mechanical parts: two (2) years,
 - Parts made of wood, MDF and plastic laminate: two (2) years
 - Floor construction: two (2) years
4. Automatic doors, semiautomatic and bus type doors: Steel sheet, electrical and electronic parts: two (2) years
5. Various part: Rollers, wire ropes and guide rails: two (2) years
6. Lift safety components (over speed governor, hydraulic buffers, diversion sheaves, safety gear): two (2) years
7. Car sling, counterweight sling, machine base and mechanical parts: two (2) years.

After the expiry of the guarantee periods, as stated above, the Supplier assumes no responsibility and is under no obligation regarding repair or replacement.

During the respective above stated guarantee periods, KLEEMANN reserves the right to further evaluate and decide on its own whether it will repair or supply the

ordering party with any necessary replacement parts for defective parts provided that:

- The handling, installation, maintenance and use instructions for the lift products have been applied by the ordering party as stated by the Supplier or in general by the manufacturer of the order component.
- The cause of the defect for the specific lift part is attributed solely to the manufacturer and no damage has been caused due to the following no-guarantee conditions:
 Unsuitable or improper use (including possible beneficial use of the product or its use for transport of persons/loads prior to the certification of the product or prior to handover to the final client), faulty installation and/or improper or faulty or no compliant with the Supplier's instructions shipping/commissioning by the ordering party or third parties, natural wear and tear, faulty or negligent treatment, improper or negligent maintenance, unsuitable supplies, defective construction work, faulty or improperly constructed or no compliant with the Supplier's specifications and the functional conditions installation space (suggestively lift-shaft space, engine room etc), unsuitable building estate, interference by unauthorized person to any mechanical or electronic elements of the product, chemical, electronic or electric influences, non-performance of all necessary testing of the safety components according to the Standards EN 81.20, 81.50 and the local regulations, as applicable from time to time – unless the Supplier is responsible for such circumstances by a specific written agreement.

Specifically, the following cases are not covered by any guarantee:

- a. Wears to lift parts due to damages, corrosion, moisture attributed to inappropriate transportation, storing, handling, installation or use of the products as stated in the product manuals provided by the Supplier.
- b. Ram sealing elements, oils and car sling guidance elements.
- c. Wears due to inappropriate lift installation or installation of any mechanical or electrical lift parts by unauthorized by the company personnel as stated in the product manuals provided by the Supplier.
- d. Wears due to the supply of the mains current electrical network, provision of unsuitable electrical current (e.g. non-constant provision of three-phase current, use of generator etc) weather conditions (e.g. floods, thunders etc) or any other destructive external causes.
- e. Car parts or wooden parts subject to: moisture or rain or extremely humid environment or being installed within a 300m range from sea.
- f. Damages on surface of stainless-steel doors and car panels after their protective plastic cover has been removed.

If the defect is not substantial (i.e. not of the essence), the ordering party shall only be entitled to request a mutually agreed reduction of the purchase price.

The ordering party shall have to provide the Supplier with sufficient time and option for Supplier to perform any necessary rework or replace any defective parts. If this is not the case, the supplier shall be indemnified against liability for any consequences resulting there from. The Supplier shall bear the costs of a defect replacement including shipment costs as well as any reasonable charges arising, even from services providing technical support on site, that are pre-agreed between the two parties, only if the claim of the ordering party is justified and accepted by the Supplier.

Any parts replaced shall immediately become the Supplier's property. The guarantee period provided specifically for the repaired components is six (6) months after the date of the conclusion of the repair certified to the ordering party by the Supplier.

The ordering party should examine the reworked or replaced goods without delay after delivery and state whether these are of its absolute satisfaction. It is presumed that the goods are of the absolute satisfaction of the ordering party if the latter does not object within a reasonable time of three days after delivery. If improper rework has been performed by the ordering party or by a third party on items provided by the Supplier, the Supplier shall not assume any liability for any consequences resulting there from. This shall also apply to any modifications of the provided items performed without the Supplier's prior expressed approval.

Any additional commercial warranty will be granted by the Supplier only by a separate document which will include the terms under which the commercial warranty is granted.

Thessaloniki, Greece shall be the place of performance and the place of jurisdiction. The laws of Greece shall exclusively govern any dispute arising in any way from the present document and its performance.

CERTIFICATE | ΠΙΣΤΟΠΟΙΗΤΙΚΟ | CERTIFICA | 证书 | CERTIFICAT



ASSESSMENT DECISION (CERTIFICATE) FULL QUALITY ASSURANCE

Annex XI, Module H1, Lift Directive 2014/33/EU

Notified Body **TÜV AUSTRIA HELLAS LTD**
429, Mesogeion Ave.
153 43 Athens, Greece

Certificate number **16067692 revision B**

Notified Body identification number **0906**

1. Name & Address of the Manufacturer / Certificate Holder: **KLEEMANN HELLAS S.A.**
Kilkis Industrial Area
GR-61100, Kilkis
Greece

2. Category of lifts installations: Electric & Hydraulic Lifts for the transport of Persons & Goods

3. Date of submission: 12/01/2016

4. Audit period: January 2016 – March 2017

5. Applied EU Directives and standards: **Directive 2014/33/EU,**
EN 81-1:1998+A3:2009, EN 81-2:1998+A3:2009
EN 81-21:2009+A1:2012
EN 81-20:2014, EN 81-50:2014

6. Audit report number & date: 16067692 revision B – 23/03/2017

CONCLUSION - STATEMENT

The notified body for lifts TÜV AUSTRIA HELLAS hereby certifies that the above mentioned manufacturer has established and applies a quality system, according to European Lift Directive 2014/33/EU, Annex XI, for the following scopes of application

DESIGN – MANUFACTURE – ASSEMBLY – STUDIES OF INSTALLATION – METHODS OF FINAL INSPECTION & TESTING

for the above described categories of lifts.

Additional obligations of the manufacturer:

The manufacturer must keep the notified body informed of any intended updating of the quality system. The quality system must be subject to surveillance by the notified body.

The certificate is valid until 30/01/2019
Initially issued: Athens, 31/01/2016 – 1st Revision: Athens, 05/02/2016
2nd Revision: Athens, 24/03/2017 (the modifications are marked by underlining)

For the Notified Body

Ioannis Kallias
General Manager



TÜV AUSTRIA
GROUP

reproduction of this document is subject to the approval by TÜV AUSTRIA HELLAS | Αναπαραγωγή του παρόντος πλαισίου κατόπιν έγκρισης της TÜV AUSTRIA HELLAS

CERTIFICATE | ΠΙΣΤΟΠΟΙΗΤΙΚΟ | CERTIFICA | 证书 | CERTIFICAT



CERTIFICATE

Management System as per EN ISO 9001 : 2015

In accordance with TÜV AUSTRIA procedures, it is hereby certified that



KLEEMANN HELLAS S.A. INDUSTRIAL AREA OF KILKIS GR-611 00 KILKIS, GREECE

Applies a Quality Management System in line with the above Standard for the following Scope

DESIGN, MANUFACTURE, ASSEMBLY, STUDIES OF INSTALLATION, METHODS OF FINAL INSPECTION AND TESTING OF LIFTS AND COMPONENTS.

Certificate Registration No.: **010160036**

Valid until: 2021-01-29
Initial certification: 2010-01-16

Haralabos Ageloudis
Head of Management Systems & Products Certification Division
Certification Body
at TÜV AUSTRIA

Athens, 2018-01-30

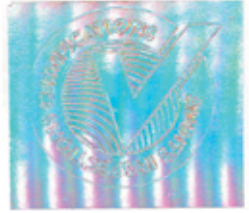
This certification was conducted in accordance with TÜV AUSTRIA auditing and certification procedures and is subject to regular surveillance audits.

TÜV AUSTRIA HELLAS
429, Mesogeion Ave.
GR-153 43 Athens, Greece
www.tuvaustriahellas.gr



CePRK478_A1 e

Headquarters in Athens bear the responsibility of the Certification decision



TÜV AUSTRIA
GROUP

The reproduction of this document is subject to the approval by TÜV AUSTRIA HELLAS | Αναπαραγωγή του παρόντος πλαισίου κατόπιν έγκρισης της TÜV AUSTRIA HELLAS

CERTIFICATE | ZERTIFIKAT | ΠΙΣΤΟΠΟΙΗΤΙΚΟ | CERTIFICA | شهادة | 证书 | CERTIFICAT

CERTIFICATE



Management System as per
EN ISO 14001 : 2015

In accordance with TÜV AUSTRIA procedures, it is hereby certified that



KLEEMANN HELLAS S.A.
Industrial Area of Kilkis
GR-611 00 KILKIS, GREECE

Applies an Environmental Management System in line with the above Standard for the following Scope

DESIGN (INCLUDED ECODSIGN), MANUFACTURE, ASSEMBLY, STUDIES OF INSTALLATION, METHODS OF FINAL INSPECTION AND TESTING OF LIFTS AND COMPONENTS.

Certificate Registration No.: **04015071**

Valid until: 2021-07-03
Initial certification: 2012-10-04

Haralabos Ageloudis
Head of Management Systems & Products Certification Division
Certification Body
at TÜV AUSTRIA

Athens, 2018-07-04

This certification was conducted in accordance with TÜV AUSTRIA auditing and certification procedures and is subject to regular surveillance audits.

TÜV AUSTRIA HELLAS
429, Mesogeion Ave.
GR-153 43 Athens, Greece
www.tuvaustriahellas.gr



CaPRK483_A1a

Headquarters in Athens bear the responsibility of the Certification decision



The reproduction of this document is subject to the approval by TÜV AUSTRIA HELLAS. Η αναπαραγωγή του παρόντος πόρου αποτελεί εγκληματικό έγκλημα. TÜV AUSTRIA HELLAS

CONFORMATION



TÜV AUSTRIA

Confirms that the Environmental Management System of the company



KLEEMANN HELLAS S.A.
INDUSTRIAL AREA OF KILKIS
GR-611 00 KILKIS, GREECE

(which is certified according to the requirements of the Standard EN ISO 14001:2004, registration number 04015071) complies with the requirements of the Standard EN ISO 14006:2011 for the activity:

IDENTIFICATION AND EVALUATION OF ENVIRONMENTAL ASPECTS DURING THE DESIGN AND DEVELOPMENT PROCESSES OF PRODUCT LIFE, AS A PART OF CERTIFIED ENVIRONMENTAL MANAGEMENT SYSTEM ISO 14001:2004.

Registration No.: **019037**

Valid until: 2021-07-03
Initial certification: 2015-10-04

Haralabos Ageloudis
Head of Management Systems & Products Certification Division
Certification Body
at TÜV AUSTRIA

Athens, 2018-07-04

The assessment was performed according to the relevant Auditing Procedure of TÜV AUSTRIA.

TÜV AUSTRIA HELLAS
429, Mesogeion Ave.
GR-153 43 Athens, Greece
www.tuvaustriahellas.gr

CaPRK443_A1a

Headquarters in Athens bear the responsibility of the Certification decision



The reproduction of this document is subject to the approval by TÜV AUSTRIA HELLAS. Η αναπαραγωγή του παρόντος πόρου αποτελεί εγκληματικό έγκλημα. TÜV AUSTRIA HELLAS

CERTIFICATE | ZERTIFIKAT | ΠΙΣΤΟΠΟΙΗΤΙΚΟ | CERTIFICA | شهادة | CERTIFICAT

CERTIFICATE



Management System as per
OHSAS 18001 : 2007 / ELOT 1801 : 2008

In accordance with TÜV AUSTRIA procedures, it is hereby certified that



KLEEMANN HELLAS S.A.
Industrial Area of Kilkis
GR-611 00 KILKIS, GREECE

Applies an Occupational Health & Safety Management System in line with the above Standards for the following Scope

DESIGN (INCLUDED ECODSIGN), MANUFACTURE, ASSEMBLY, STUDIES OF INSTALLATION, METHODS OF FINAL INSPECTION AND TESTING OF LIFTS AND COMPONENTS.

EA Scope / Risk category: 17.2 / B, 18.1 / A, 34 / B

Certificate Registration No.: **03015046**

Valid until: 2021-07-03
Initial certification: 2012-07-04

Haralabos Ageloudis
Head of Management Systems & Products Certification Division
Certification Body
at TÜV AUSTRIA

Athens, 2018-07-04

This certification was conducted in accordance with TÜV AUSTRIA auditing and certification procedures and is subject to regular surveillance audits.

TÜV AUSTRIA HELLAS
429, Mesogeion Ave.
GR-153 43 Athens, Greece
www.tuvaustriahellas.gr



CePRK617_A6e

Headquarters in Athens bear the responsibility of the Certification decision



The reproduction of this document is subject to the approval by TÜV AUSTRIA HELLAS. Η αναπαραγωγή του παρόντος πτυχίου απαιτεί την έγκριση της TÜV AUSTRIA HELLAS.

CERTIFICATE | ZERTIFIKAT | ΠΙΣΤΟΠΟΙΗΤΙΚΟ | CERTIFICA | شهادة | CERTIFICAT

CONFORMATION



TÜV AUSTRIA

Confirms that the Quality Management System of the company



KLEEMANN HELLAS S.A.
Industrial Area of Kilkis
GR-611 00 KILKIS, GREECE

is according to the requirements of the standard ISO 10002:2004 Quality management - Customer Satisfaction guidelines for complaints handling in organizations. It has been evaluated and accessed for:

DESIGN, MANUFACTURE, ASSEMBLY, STUDIES OF INSTALLATION, METHODS OF FINAL INSPECTION AND TESTING OF LIFTS AND COMPONENTS.

Registration No.: **019119**

Valid until: 2019-02-01

Certification Body
at TÜV AUSTRIA

Athens, 2016-02-02

The assessment was performed according to the relevant Auditing Procedure of TÜV AUSTRIA.

TÜV AUSTRIA HELLAS
429, Mesogeion Ave.
GR-153 43 Athens, Greece
www.tuvaustriahellas.gr



TÜV AUSTRIA
GROUP

CePRK436_A2ea

The reproduction of this document is subject to the approval by TÜV AUSTRIA HELLAS. Η αναπαραγωγή του παρόντος πτυχίου απαιτεί την έγκριση της TÜV AUSTRIA HELLAS.



EC-CERTIFICATE



Conformity of Factory Production Control
No 0906 – CPR – 011639704904

In compliance with Regulation (EU) No 305/2011 of the European Parliament and of the Council of 9 March 2011(the Construction products Regulation or CPR), and also in accordance with TÜV AUSTRIA procedures, this certificate applies to the construction product: **Steel and Aluminium Structure EXC 1, Method of Declaration 2** (according to EN 1090-1:2009+A1:2011), **Clause ZA 3.3 and Parent Material 1.1, 1.2, 23**(according to ISO/TR 15608).

Placed on the market under the name

KLEEMANN HELLAS S.A.
INDUSTRIAL AREA OF KILKIS
GR-611 00 KILKIS, GREECE

and produced in the manufacturing plant

KLEEMANN HELLAS S.A.
INDUSTRIAL AREA OF KILKIS
GR-611 00 KILKIS, GREECE

This certificate attests that all provisions concerning the assessment and verification of constancy of performance described in Annex ZA of the standard(s):

EN 1090-1:2009+A1:2011

under system 2+ are applied and that

the factory production control is assessed to be in conformity with the applicable requirements

This certificate was first issued on 2019-07-25 and will remain valid as long as neither the harmonised standard, the construction product, the AVCP methods nor the manufacturing conditions in the plant are modified significantly, unless suspended or withdrawn by the notified factory production control certification body or at the latest until 2022-07-24.

Valid until: 2022-07-24
 Initial certification: 2016-07-25

Nikolaos Sifakis
 Head of Management Systems & Products Certification Division
 Certification Body
 at TÜV AUSTRIA

Athens, 2019-07-25

This certification was conducted in accordance with TÜV AUSTRIA auditing and certification procedures and is subject to regular surveillance audits.

TÜV AUSTRIA HELLAS
 429, Mesogelion Ave.
 GR-153 43 Athens, Greece
www.tuvaustriahellas.gr



CePRK506_A0s

Headquarters in Athens bear the responsibility of the Certification decision

Veröffentlichung nur mit Erlaubnis des TÜV AUSTRIA | The reproduction of this document is subject to the approval by TÜV AUSTRIA



Watch our KLEEMANN facilities video



kleemannlifts.com

KLEEMANN HELLAS SA
Kilkis Industrial Area, P.O. BOX 25, Kilkis, 611 00 - Greece
G.E.MI. 14486435000
www.kleemannlifts.com

While every effort has been to ensure the accuracy of the information in this brochure, KLEEMANN assumes no responsibility for omissions or typographical errors. Images are for demonstration purposes only. They are not suitable for construction/building purposes, nor feasibility studies.

Copyright © KLEEMANN 2020